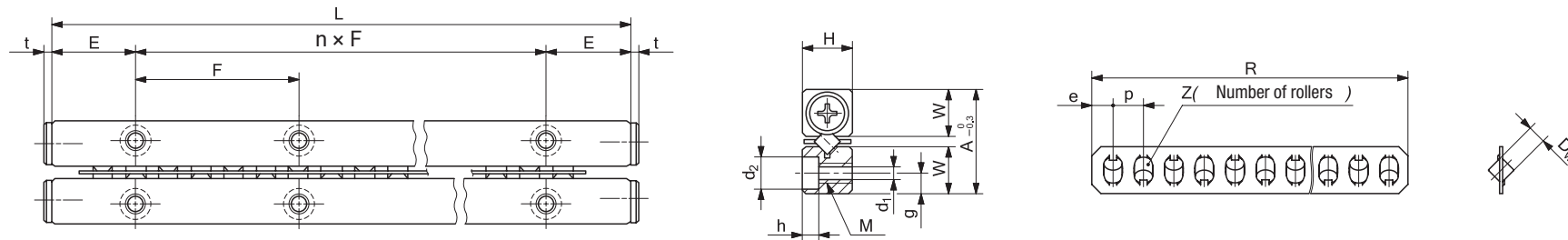


IKO Crossed Roller Way

CRW



Model number	Mass (Ref.)		Boundary dimensions				Dimensions of roller cage					Mounting dimensions						Basic dynamic load rating $C_U^{(3)}$ N	Basic static load rating $C_{0U}^{(3)}$ N	Allowable load $F_U^{(3)}$ N	
	Way ⁽¹⁾ kg/m	Roller cage ⁽²⁾ g	A	H	L (n x F)	E	Dw	R	Z	p	e	W	g	M	d1	d2	h				t
CRW 1- 20	0.12	0.38	8.5	4	20 (1 x 10)	5	1.5	16.5	5	3	2.25	3.9	1.8	M2	1.65	3	1.4	1.7	131	191	39.6
CRW 1- 20 SL																					
CRW 1- 30					30 (2 x 10)			25.5	8												
CRW 1- 30 SL																					
CRW 1- 40					40 (3 x 10)			31.5	10												
CRW 1- 40 SL																					
CRW 1- 50					50 (4 x 10)			37.5	12												
CRW 1- 50 SL																					
CRW 1- 60					60 (5 x 10)			43.5	14												
CRW 1- 60 SL																					
CRW 1- 70					70 (6 x 10)			52.5	17												
CRW 1- 70 SL																					
CRW 1- 80	80 (7 x 10)	61.5	20																		
CRW 1- 80 SL																					

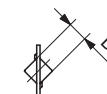
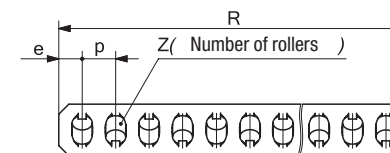
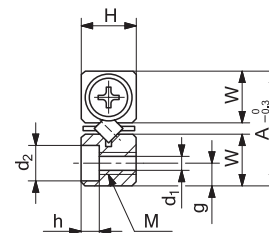
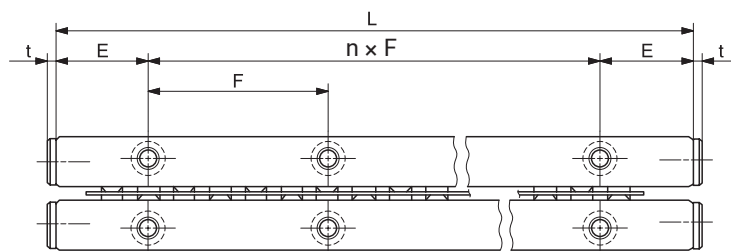
(1) : This value shows mass per one meter for individual way.

(2) : This value shows mass of one roller cage in which ten rollers are incorporated.

(3) : This value shows load per one roller.

IKO Crossed Roller Way

CRW



Model number	Mass (Ref.)		Boundary dimensions				Dimensions of roller cage					Mounting dimensions						Basic dynamic load rating Cu ⁽³⁾ N	Basic static load rating CoU ⁽³⁾ N	Allowable load Fu ⁽³⁾ N	
	Way ⁽¹⁾ kg/m	Roller cage ⁽²⁾ g	A	H	L (n x F)	E	Dw	R	Z	p	e	W	g	M	d1	d2	h				t
CRW 2- 30	0.24	0.98	12	6	30 (1 x 15)	7.5	2	29.6	7	4	2.8	5.5	2.5	M3	2.55	4.4	2	1.5	305	292	97.3
CRW 2- 30 SL																					
CRW 2- 45					45 (2 x 15)			41.6	10												
CRW 2- 45 SL																					
CRW 2- 60					60 (3 x 15)			53.6	13												
CRW 2- 60 SL																					
CRW 2- 75					75 (4 x 15)			65.6	16												
CRW 2- 75 SL																					
CRW 2- 90					90 (5 x 15)			77.6	19												
CRW 2- 90 SL																					
CRW 2- 105					105 (6 x 15)			89.6	22												
CRW 2- 105 SL																					
CRW 2- 120					120 (7 x 15)			101.6	25												
CRW 2- 120 SL																					
CRW 2- 135					135 (8 x 15)			113.6	28												
CRW 2- 135 SL																					
CRW 2- 150					150 (9 x 15)			125.6	31												
CRW 2- 150 SL																					
CRW 2- 165	165 (10 x 15)	137.6	34																		
CRW 2- 165 SL																					
CRW 2- 180	180 (11 x 15)	149.6	37																		
CRW 2- 180 SL																					

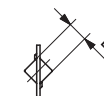
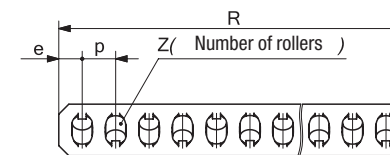
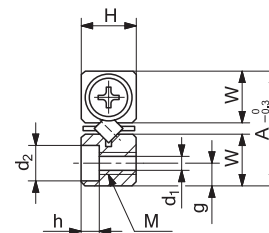
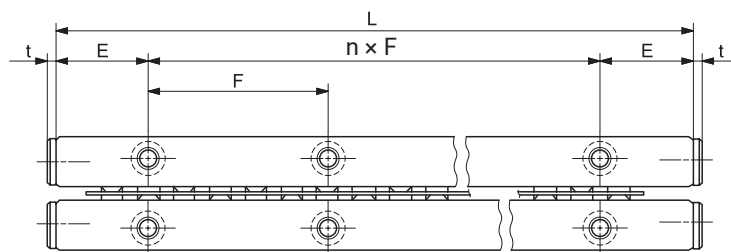
(1) : This value shows mass per one meter for individual way.

(2) : This value shows mass of one roller cage in which ten rollers are incorporated.

(3) : This value shows load per one roller.

IKO Crossed Roller Way

CRW



Model number	Mass (Ref.)		Boundary dimensions				Dimensions of roller cage					Mounting dimensions						Basic dynamic load rating C _U ⁽³⁾ N	Basic static load rating C _{0U} ⁽³⁾ N	Allowable load F _U ⁽³⁾ N	
	Way ⁽¹⁾ kg/m	Roller cage ⁽²⁾ g	A	H	L (n x F)	E	Dw	R	Z	p	e	W	g	M	d1	d2	h				t
CRW 3- 50	0.50	2.96	18	8	50 (1 x 25)	12.5	3	42	8	5	3.5	8.3	3.5	M4	3.3	6	3.1	2	664	606	202
CRW 3- 50 SL					75 (2 x 25)			62	12												
CRW 3- 75					100 (3 x 25)			82	16												
CRW 3- 75 SL					125 (4 x 25)			102	20												
CRW 3- 100					150 (5 x 25)			122	24												
CRW 3- 100 SL					175 (6 x 25)			142	28												
CRW 3- 125					200 (7 x 25)			162	32												
CRW 3- 125 SL					225 (8 x 25)			182	36												
CRW 3- 150					250 (9 x 25)			202	40												
CRW 3- 150 SL					275 (10 x 25)			222	44												
CRW 3- 175					300 (11 x 25)			242	48												
CRW 3- 175 SL																					
CRW 3- 200																					
CRW 3- 200 SL																					
CRW 3- 225																					
CRW 3- 225 SL																					
CRW 3- 250																					
CRW 3- 250 SL																					
CRW 3- 275																					
CRW 3- 275 SL																					
CRW 3- 300																					
CRW 3- 300 SL																					

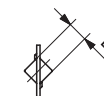
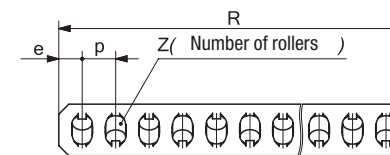
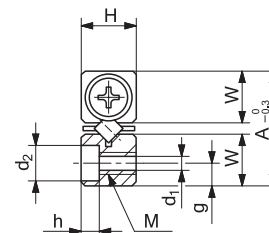
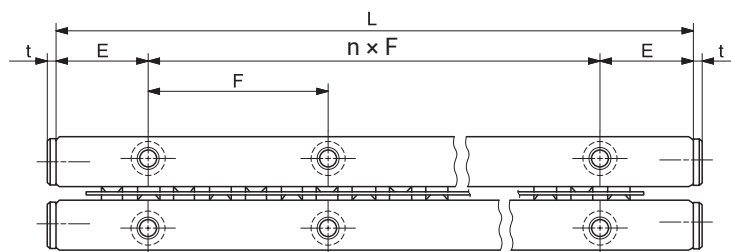
(1) : This value shows mass per one meter for individual way.

(2) : This value shows mass of one roller cage in which ten rollers are incorporated.

(3) : This value shows load per one roller.

IKO Crossed Roller Way

CRW



Model number	Mass (Ref.)		Boundary dimensions				Dimensions of roller cage					Mounting dimensions						Basic dynamic load rating C _U ⁽³⁾ N	Basic static load rating C _{0U} ⁽³⁾ N	Allowable load F _U ⁽³⁾ N	
	Way ⁽¹⁾ kg/m	Roller cage ⁽²⁾ g	A	H	L (n x F)	E	Dw	R	Z	p	e	W	g	M	d1	d2	h				t
CRW 4- 80	0.82	6.91	22	11	80 (1 x 40)	20	4	73	10	7	5	10	4.5	M5	4.3	7.5	4.1	2	1290	1170	389
CRW 4- 80 SL																					
CRW 4- 120					120 (2 x 40)			101	14												
CRW 4- 120 SL																					
CRW 4- 160					160 (3 x 40)			136	19												
CRW 4- 160 SL																					
CRW 4- 200					200 (4 x 40)			164	23												
CRW 4- 200 SL																					
CRW 4- 240					240 (5 x 40)			199	28												
CRW 4- 240 SL																					
CRW 4- 280					280 (6 x 40)			227	32												
CRW 4- 280 SL																					
CRW 4- 320					320 (7 x 40)			262	37												
CRW 4- 320 SL																					
CRW 4- 360					360 (8 x 40)			297	42												
CRW 4- 360 SL																					
CRW 4- 400					400 (9 x 40)			325	46												
CRW 4- 400 SL																					
CRW 4- 440	440 (10 x 40)	360	51																		
CRW 4- 440 SL																					
CRW 4- 480	480 (11 x 40)	388	55																		
CRW 4- 480 SL																					

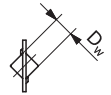
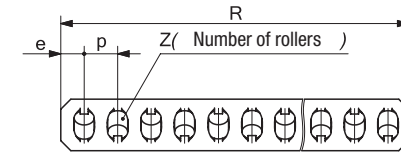
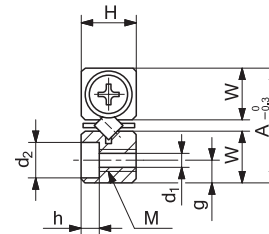
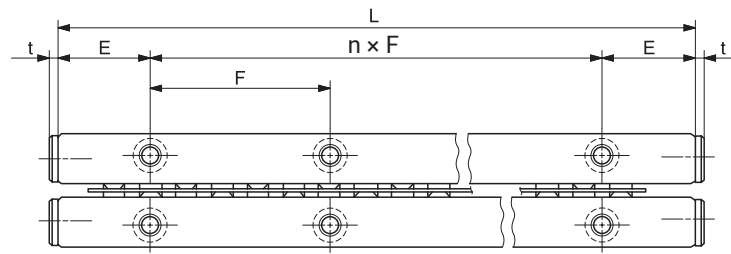
(1) : This value shows mass per one meter for individual way.

(2) : This value shows mass of one roller cage in which ten rollers are incorporated.

(3) : This value shows load per one roller.

IKO Crossed Roller Way

CRW

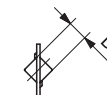
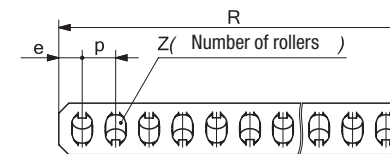
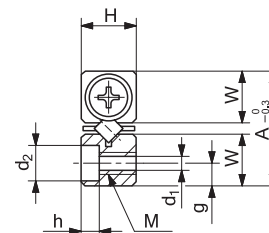
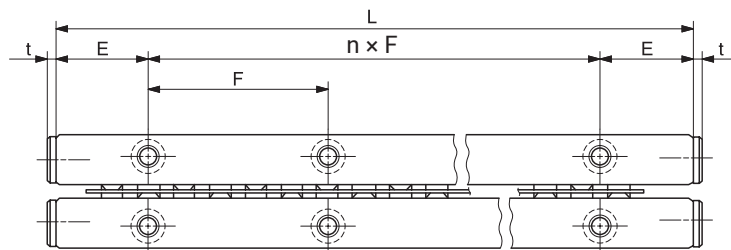


Model number	Mass (Ref.)		Boundary dimensions				Dimensions of roller cage					Mounting dimensions						Basic dynamic load rating C _U ⁽³⁾ N	Basic static load rating C _{0U} ⁽³⁾ N	Allowable load F _U ⁽³⁾ N	
	Way ⁽¹⁾ kg/m	Roller cage ⁽²⁾ g	A	H	L (n x F)	E	Dw	R	Z	p	e	W	g	M	d1	d2	h				t
CRW 6- 100	1.57	20.3	31	15	100 (1 x 50)	25	6	84	9	9	6	14	6	M6	5.3	9.5	5.2	3	2680	2290	764
CRW 6- 100 SL					129			14													
CRW 6- 150					150 (2 x 50)			165	18												
CRW 6- 150 SL					200 (3 x 50)			210	23												
CRW 6- 200					250 (4 x 50)			246	27												
CRW 6- 200 SL					300 (5 x 50)			282	31												
CRW 6- 250					350 (6 x 50)			327	36												
CRW 6- 250 SL					400 (7 x 50)			363	40												
CRW 6- 300					450 (8 x 50)			408	45												
CRW 6- 300 SL					500 (9 x 50)			444	49												
CRW 6- 350					550 (10 x 50)			489	54												
CRW 6- 350 SL					600 (11 x 50)																
CRW 6- 400																					
CRW 6- 400 SL																					
CRW 6- 450																					
CRW 6- 450 SL																					
CRW 6- 500																					
CRW 6- 500 SL																					
CRW 6- 550																					
CRW 6- 550 SL																					
CRW 6- 600																					
CRW 6- 600 SL																					

(1) : This value shows mass per one meter for individual way.
 (2) : This value shows mass of one roller cage in which ten rollers are incorporated.
 (3) : This value shows load per one roller.

IKO Crossed Roller Way

CRW



Model number	Mass (Ref.)		Boundary dimensions				Dimensions of roller cage						Mounting dimensions						Basic dynamic load rating $C_U^{(3)}$ N	Basic static load rating $C_{0U}^{(3)}$ N	Allowable load $F_U^{(3)}$ N
	Way ⁽¹⁾ kg/m	Roller cage ⁽²⁾ g	A	H	L (n x F)	E	Dw	R	Z	p	e	W	g	M	d1	d2	h	t			
CRW 9- 200	3.3	64.8	44	22	200 (1 x 100)	50	9	173	12	14	9.5	20.2	9	M8	6.8	10.5	6.2	3	7490	6560	2190
CRW 9- 300					300 (2 x 100)			257	18												
CRW 9- 400					400 (3 x 100)			327	23												
CRW 9- 500					500 (4 x 100)			411	29												
CRW 9- 600					600 (5 x 100)			495	35												
CRW 9- 700					700 (6 x 100)			565	40												
CRW 9- 800					800 (7 x 100)			649	46												
CRW 9- 900					900 (8 x 100)			733	52												
CRW 9- 1000					1000 (9 x 100)			817	58												
CRW 9- 1100					1100 (10 x 100)			887	63												
CRW 9- 1200					1200 (11 x 100)			971	69												
CRW 12- 200	5.57	146	58	28	200 (1 x 100)	50	12	168	9	18	12	26.9	12	M10	8.5	13.5	8.2	3	15300	13500	4510
CRW 12- 300					300 (2 x 100)			258	14												
CRW 12- 400					400 (3 x 100)			330	18												
CRW 12- 500					500 (4 x 100)			420	23												
CRW 12- 600					600 (5 x 100)			492	27												
CRW 12- 700					700 (6 x 100)			564	31												
CRW 12- 800					800 (7 x 100)			654	36												
CRW 12- 900					900 (8 x 100)			726	40												
CRW 12- 1000					1000 (9 x 100)			816	45												
CRW 12- 1100					1100 (10 x 100)			888	49												
CRW 12- 1200					1200 (11 x 100)			978	54												

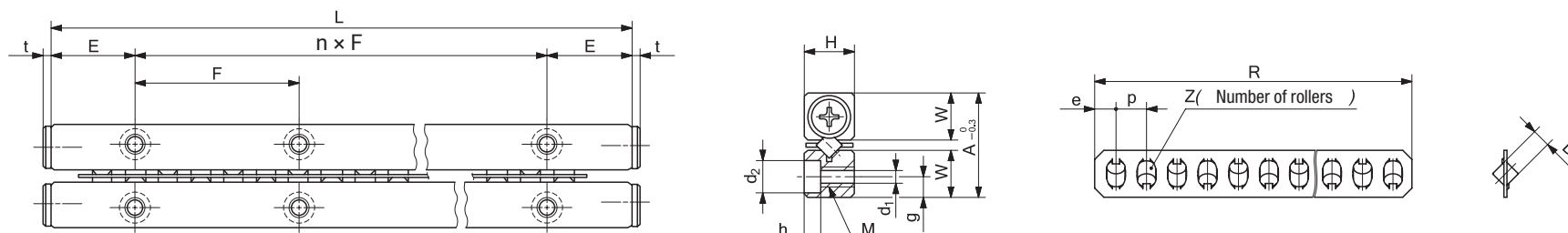
(1) : This value shows mass per one meter for individual way.

(2) : This value shows mass of one roller cage in which ten rollers are incorporated.

(3) : This value shows load per one roller.

IKO Crossed Roller Way

CRW



Model number	Mass (Ref.)		Boundary dimensions				Dimensions of roller cage						Mounting dimensions						Basic dynamic load rating $C_U^{(3)}$ N	Basic static load rating $C_{0U}^{(3)}$ N	Allowable load $F_U^{(3)}$ N
	Way ⁽¹⁾ kg/m	Roller cage ⁽²⁾ g	A	H	L (n x F)	E	Dw	R	Z	p	e	W	g	M	d1	d2	h	t			
CRW 15- 300	8.75	273	71	36	300 (2 x 100)	50	15	261	11	23	15.5	33	14	M12	10.5	16.5	10.2	5	24800	21800	7250
CRW 15- 400					400 (3 x 100)			330	14												
CRW 15- 500					500 (4 x 100)			422	18												
CRW 15- 600					600 (5 x 100)			491	21												
CRW 15- 700					700 (6 x 100)			583	25												
CRW 15- 800					800 (7 x 100)			652	28												
CRW 15- 900					900 (8 x 100)			744	32												
CRW 15- 1000					1000 (9 x 100)			813	35												
CRW 15- 1100					1100 (10 x 100)			905	39												
CRW 15- 1200					1200 (11 x 100)			974	42												
CRW 18- 300					11.3			447	83												
CRW 18- 400	400 (3 x 100)	346	12																		
CRW 18- 500	500 (4 x 100)	430	15																		
CRW 18- 600	600 (5 x 100)	514	18																		
CRW 18- 700	700 (6 x 100)	570	20																		
CRW 18- 800	800 (7 x 100)	654	23																		
CRW 18- 900	900 (8 x 100)	738	26																		
CRW 18- 1000	1000 (9 x 100)	822	29																		
CRW 18- 1100	1100 (10 x 100)	906	32																		
CRW 18- 1200	1200 (11 x 100)	990	35																		

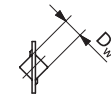
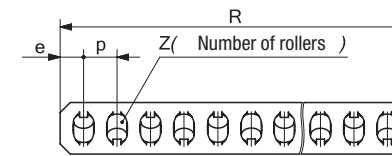
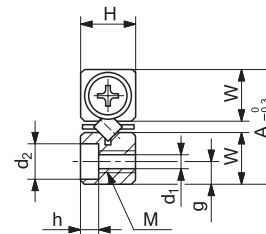
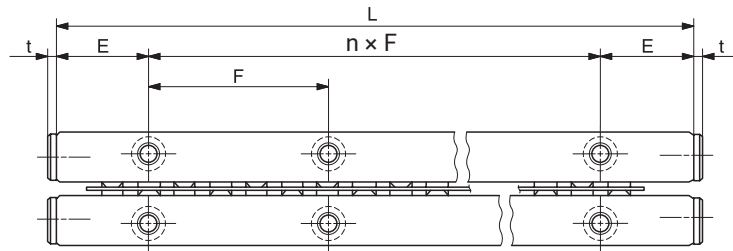
(1) : This value shows mass per one meter for individual way.

(2) : This value shows mass of one roller cage in which ten rollers are incorporated.

(3) : This value shows load per one roller.

IKO Crossed Roller Way

CRW



Model number	Mass (Ref.)		Boundary dimensions				Dimensions of roller cage					Mounting dimensions						Basic dynamic load rating $C_U^{(3)}$ N	Basic static load rating $C_{0U}^{(3)}$ N	Allowable load $F_U^{(3)}$ N			
	Way ⁽¹⁾ kg/m	Roller cage ⁽²⁾ g	A	H	L (n x F)	E	Dw	R	Z	p	e	W	g	M	d1	d2	h				t		
CRW 24- 400	20.6	1060	110	55	400 (3 x 100)	50	24	336	9	36	24	51.5	24	M16	14.5	22.5	14.2	5	72500	63100	21000		
CRW 24- 500					500 (4 x 100)			408	11													660	18
CRW 24- 600					600 (5 x 100)			516	14													732	20
CRW 24- 700					700 (6 x 100)			588	16													840	23
CRW 24- 800					800 (7 x 100)			660	18													912	25
CRW 24- 900					900 (8 x 100)			732	20													984	27
CRW 24- 1000					1000 (9 x 100)			840	23														
CRW 24- 1100					1100 (10 x 100)			912	25														
CRW 24- 1200					1200 (11 x 100)			984	27														

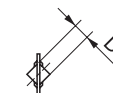
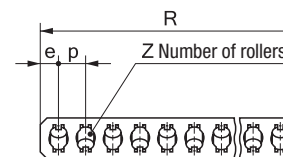
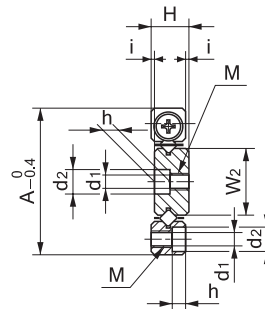
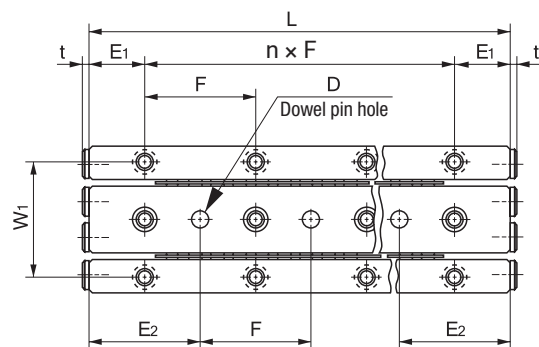
(1) : This value shows mass per one meter for individual way.

(2) : This value shows mass of one roller cage in which ten rollers are incorporated.

(3) : This value shows load per one roller.

IKO Crossed Roller Way

CRWM



Model number	Mass (Ref.)		Boundary dimensions				Dimensions of roller cage					Mounting dimensions								Basic dynamic load rating C _U ⁽³⁾ N	Basic static load rating C _{0U} ⁽³⁾ N	Allowable load F _U ⁽³⁾ N			
	Way ⁽¹⁾ kg/m	Roller cage ⁽²⁾ g	A	H	L (n x F)	i	Dw	R	Z	p	e	W1	W2	E1	E2	M	d1	d2	h				D	Tolerance	t
CRWM 1- 20	0.49	0.38	17	4.5	20 (1 x 10)	0.5	1.5	16.5	5	3	2.25	13.4	7.8	5	10	M2	1.65	3	1.4	2	+0.010 0	1.7	131	119	39.6
CRWM 1- 30					30 (2 x 10)			25.5	8																
CRWM 1- 40					40 (3 x 10)			31.5	10																
CRWM 1- 50					50 (4 x 10)			37.5	12																
CRWM 1- 60					60 (5 x 10)			43.5	14																
CRWM 1- 70					70 (6 x 10)			52.5	17																
CRWM 1- 80					80 (7 x 10)			61.5	20																
CRWM 2- 30	0.99	0.98	24	6.5	30 (1 x 25)	0.5	2	29.6	7	4	2.8	19	11	7.5	15	M3	2.55	4.4	2	3	+0.010 0	1.5	3.5	292	97.3
CRWM 2- 45					45 (2 x 15)			41.6	10																
CRWM 2- 60					60 (3 x 15)			53.6	13																
CRWM 2- 75					75 (4 x 15)			65.6	16																
CRWM 2- 90					90 (5 x 15)			77.6	19																
CRWM 2- 105					105 (6 x 15)			89.6	22																
CRWM 2- 120					120 (7 x 15)			101.6	25																
CRWM 2- 135					135 (8 x 15)			113.6	28																
CRWM 2- 150					150 (9 x 15)			125.6	31																
CRWM 2- 165					165 (10 x 15)			137.6	34																
CRWM 2- 180					180 (11 x 15)			149.6	37																

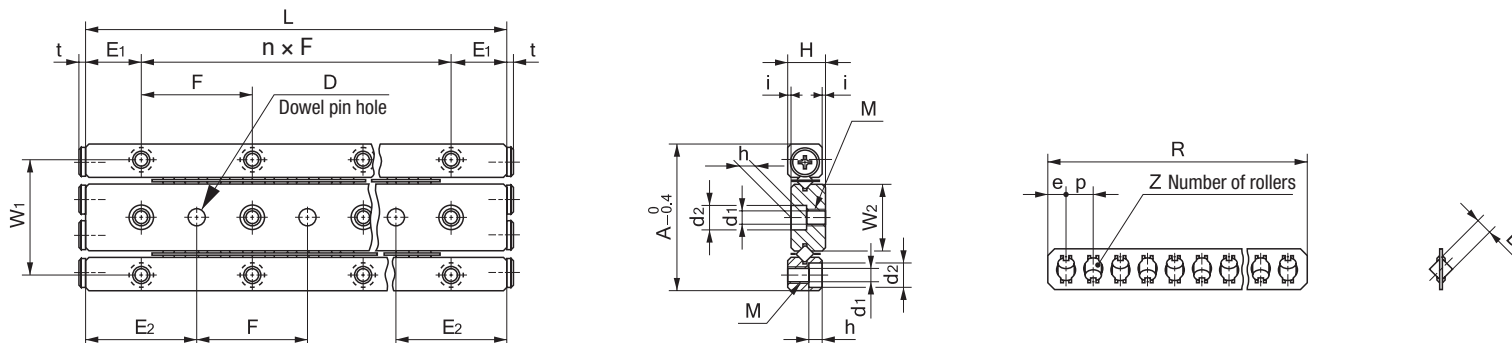
(1) : This value shows mass per one meter for individual way.

(2) : This value shows mass of one roller cage in which ten rollers are incorporated.

(3) : This value shows load per one roller.

IKO Crossed Roller Way

CRWM



Model number	Mass (Ref.)		Boundary dimensions				Dimensions of roller cage						Mounting dimensions										Basic dynamic load rating $C_U^{(3)}$ N	Basic static load rating $C_{0U}^{(3)}$ N	Allowable load $F_U^{(3)}$ N	
	Way ⁽¹⁾ kg/m	Roller cage ⁽²⁾ g	A	H	L (n x F)	i	Dw	R	Z	p	e	W1	W2	E1	E2	M	d1	d2	h	D	Tolerance	t				
CRWM 3- 50	1.99	2.96	36	8.5	50 (1 x 25)	0.5	3	42	8	5	3.5	29	16.6	12.5	25	M4	3.3	6	3.1	4	$+0.012_0$	2	664	606	202	
CRWM 3- 75					62			12	62																	12
CRWM 3- 100					82			16	82																	16
CRWM 3- 125					102			20	102																	20
CRWM 3- 150					122			24	122																	24
CRWM 3- 175					142			28	142																	28
CRWM 3- 200					162			32	162																	32
CRWM 3- 225					182			36	182																	36
CRWM 3- 250					202			40	202																	40
CRWM 3- 275					222			44	222																	44
CRWM 3- 300					242			48	242																	48

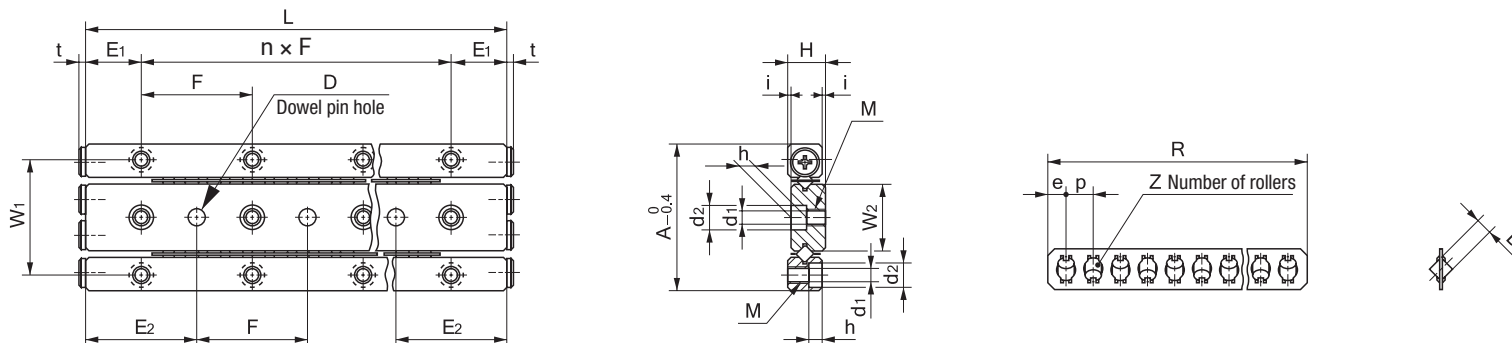
(1) : This value shows mass per one meter for individual way.

(2) : This value shows mass of one roller cage in which ten rollers are incorporated.

(3) : This value shows load per one roller.

IKO Crossed Roller Way

CRWM



Model number	Mass (Ref.)		Boundary dimensions				Dimensions of roller cage						Mounting dimensions										Basic dynamic load rating $C_U^{(3)}$ N	Basic static load rating $C_{0U}^{(3)}$ N	Allowable load $F_U^{(3)}$ N															
	Way ⁽¹⁾ kg/m	Roller cage ⁽²⁾ g	A	H	L (n x F)	i	Dw	R	Z	p	e	W1	W2	E1	E2	M	d1	d2	h	D	Tolerance	t																		
CRWM 4- 80	3.28	6.91	44	11.5	80 (1 x 40)	0.5	4	73	10	7	5	35	20	20	40	M5	4.3	7.5	4.1	5	$+0.012_0$	2	1290	1170	389															
CRWM 4- 120					101			14	136																	19	164	23	199	28	262	37	297	42	325	46	360	51	388	55
CRWM 4- 160					136			19	164																	23	199	28	262	37	297	42	325	46	360	51	388	55		
CRWM 4- 200					164			23	199																	28	262	37	297	42	325	46	360	51	388	55				
CRWM 4- 240					199			28	262																	37	297	42	325	46	360	51	388	55						
CRWM 4- 280					227			32	262																	37	297	42	325	46	360	51	388	55						
CRWM 4- 320					262			37	297																	42	325	46	360	51	388	55								
CRWM 4- 360					297			42	325																	46	360	51	388	55										
CRWM 4- 400					325			46	360																	51	388	55												
CRWM 4- 440					360			51	388																	55														
CRWM 4- 480					388			55																																

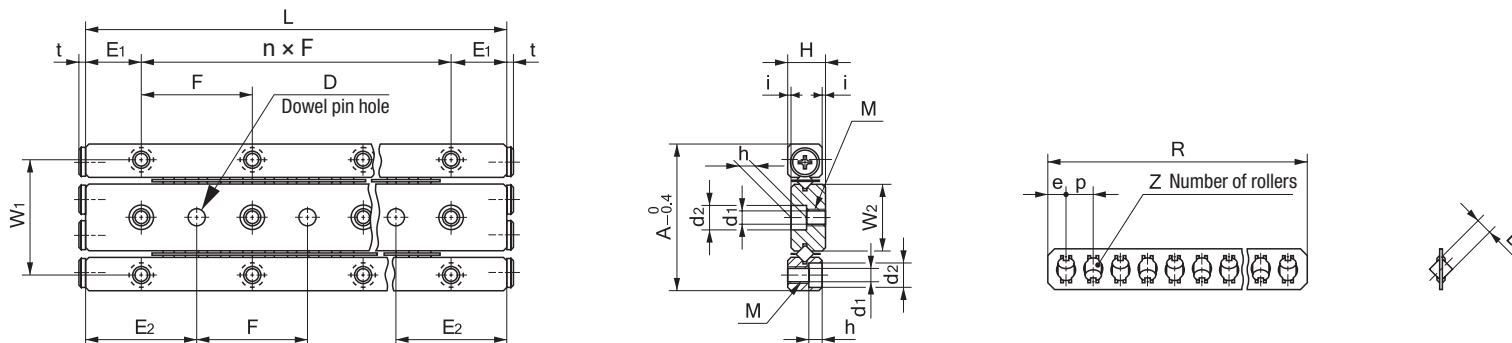
(1) : This value shows mass per one meter for individual way.

(2) : This value shows mass of one roller cage in which ten rollers are incorporated.

(3) : This value shows load per one roller.

IKO Crossed Roller Way

CRWM



Model number	Mass (Ref.)		Boundary dimensions				Dimensions of roller cage						Mounting dimensions								Basic dynamic load rating $C_U^{(3)}$ N	Basic static load rating $C_{0U}^{(3)}$ N	Allowable load $F_U^{(3)}$ N				
	Way ⁽¹⁾ kg/m	Roller cage ⁽²⁾ g	A	H	L (n x F)	i	Dw	R	Z	p	e	W1	W2	E1	E2	M	d1	d2	h	D				Tolerance	t		
CRWM 4- 80A	3.96	6.91	48	12.5	80 (1 x 40)	0.5	4	73	10	7	5	38	22	20	40	M5	4.3	8	4.1	5	$+0.012_0$	2	1290	1170	389		
CRWM 4- 120A					120 (2 x 40)			101	14																	227	32
CRWM 4- 160A					160 (3 x 40)			136	19																	262	37
CRWM 4- 200A					200 (4 x 40)			164	23																	297	42
CRWM 4- 240A					240 (5 x 40)			199	28																	325	46
CRWM 4- 280A					280 (6 x 40)			227	32																	360	51
CRWM 4- 320A					320 (7 x 40)			262	37																	388	55
CRWM 4- 360A					360 (8 x 40)			297	42																		
CRWM 4- 400A					400 (9 x 40)			325	46																		
CRWM 4- 440A					440 (10 x 40)			360	51																		
CRWM 4- 480A					480 (11 x 40)			388	55																		

(1) : This value shows mass per one meter for individual way.

(2) : This value shows mass of one roller cage in which ten rollers are incorporated.

(3) : This value shows load per one roller.